

This Data Sheet Includes Information On

Jenn-Air

• **Product Model Number (s):**

Top Mount Refrigerators:
JRTE198B, JRTE198A and JRTE198W
Kits: ICE, WDT21-04 and BDT21-04

• **Dimensions (Actual Size)**

Height with hinge assembly, 0" leg adj.: 66"
Height less hinge assembly, 0" leg adj.: 65 1/2"
Case width: 31 1/2"
Depth including handle: 29 7/8"
Depth less handle: 28"
Depth with door open 90°: 58"
Minimum opening height, 0" leg adj.: 66"
Minimum opening width: 32 1/2"

• **Additional Information**

- Width (incl. handle) when doors are open 90° is 33 7/8".
- Doors are reversible.
- Electrical requirements: 120V, 60Hz.
- If you plan to install custom panel dimensions you must purchase trim kit PTT-04 which accepts panels to 1/4". These dimensions apply to panels included in the optional panel kits and to any optional door panels.

"A" = 31 9/16" wide by 20 1/2" high

"B" = 31 9/16" wide by 39 1/16" high

If panel is more than 0.25" thick, its edges must be routed to 0.25" or less in thickness for installation. When using a built-up or sculptured panel, an 2 1/2" area adjacent to the door handles without buildup must be available to provide adequate clearance for fingers.

- JRTE198A : Almond.
- JRTE198B : Black.
- JRTE198W : White.

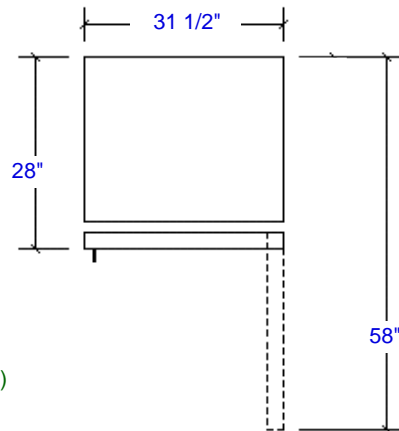
Kits:

- ICE : Optional ice dispenser.
- BDT21-04 : Optional 1/8" Plexiglass Black Door Panel Kit.
- WDT21-04 : Optional 1/8" Plexiglass White Door Panel Kit.
- PTT-04 : Stick on Perimeter Door Trim.

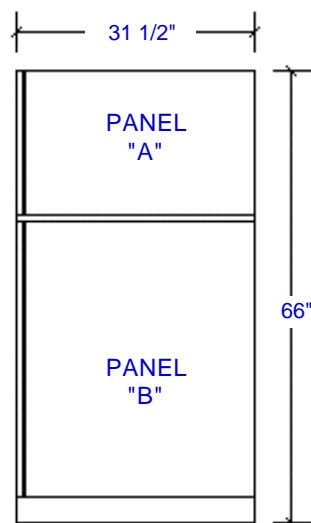
Subject to change without notice. This system is designed to be updated daily if necessary. Dimension Express is not responsible for use of superseded, voided, or outdated data sheets. Because of the difficulty or impracticability of determining actual damages, liability of Dimension Express shall not exceed \$50.00.

Copyright © Dimension Express, 2000.

105



Front View
(not to scale)



• NEVER reuse Data Sheets. Data Sheets are subject to change without notice. Dimension Express is a FREE service bureau and is updated daily, it makes far more sense to spend the time necessary to request new Data Sheets for each project, as opposed to the problems, time, costs, and risks associated with reusing old Data Sheets.

- Call Dimension Express if you have any questions at (775) 833-3633 •
- Always refer to a current Code at a Glance or manufacturer directory •
- Data Sheet codes change on the first of odd numbered months at 12:01am •

BN124.1 • A105 • 31376 • 002906 • 1652 • 17828